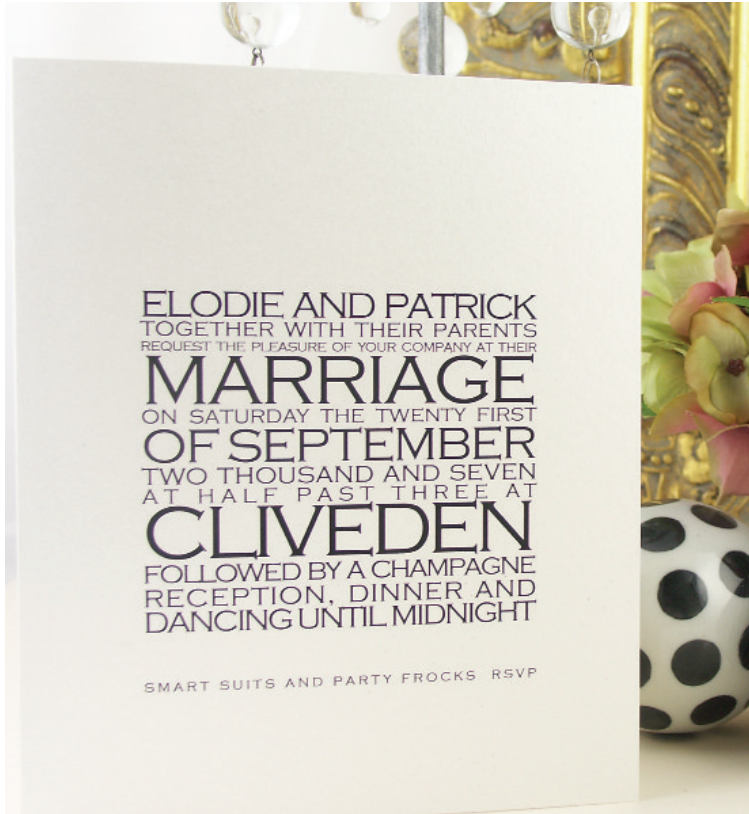
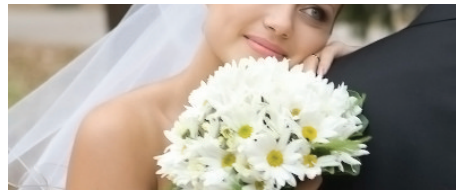


# WESTBURY



From bottom left clockwise: Block style layout, using hand written typeface, black interior ♦ Traditional layout, 3 insert cards, with marbled paper (supplied by customer) ♦ Main photograph shows Block style text in detail ♦ Sans Serif Block style text at the bottom of the front page, with a red interior ♦ Traditional layout, silver interior



CLASSIC, ELEGANT INVITATIONS, THE OUTER COVER OF THE WESTBURY DESIGN IS IVORY WITH A SUBTLE SHIMMER WHILST THE INSIDE IS PRINTED BLACK, SILVER OR DEEP RED. THE INVITATION WORDING IS PRINTED DIRECTLY ONTO THE COVER. INSIDE, A SMALL FLAP ON THE RIGHT HAND PAGE, FIRMLY HOLDS A REPLY CARD AND TWO INFORMATION CARDS. THE REPLY CARD IS PRINTED WITH YOUR RSVP ADDRESS ON ONE SIDE AND YOUR GUESTS REPLY ON THE OTHER, AND CAN BE SENT THROUGH THE POST WITHOUT AN ENVELOPE. THE INFORMATION CARDS ARE SPLIT BETWEEN DIRECTIONS AND ACCOMMODATION DETAILS, ALTHOUGH YOU CAN OF COURSE PRINT WHATEVER INFORMATION YOU WISH TO CONVEY TO YOUR GUESTS. THE INVITATIONS COME WITH MATCHING IVORY ENVELOPES. AS AN ALTERNATIVE TO THE PRINTED INTERIOR, WE CAN FIX A COLOUR PHOTOGRAPHIC IMAGE TO THE RIGHT HAND INSIDE PAGE. OR WE CAN PRINT THE INVITATION WORDING DIRECTLY ONTO THE PHOTOGRAPH AND FIX TO THE FRONT PAGE. WE CAN FURTHER PERSONALISE THE WESTBURY INVITATIONS, AND IN THE PAST HAVE FIXED HAND MARBLED ITALIAN PAPER, AN ENGAGEMENT PORTRAIT OF THE BRIDE AND GROOM AND A PHOTOGRAPH OF THE RECEPTION VENUE TO THE INSIDE RIGHT HAND PAGE.